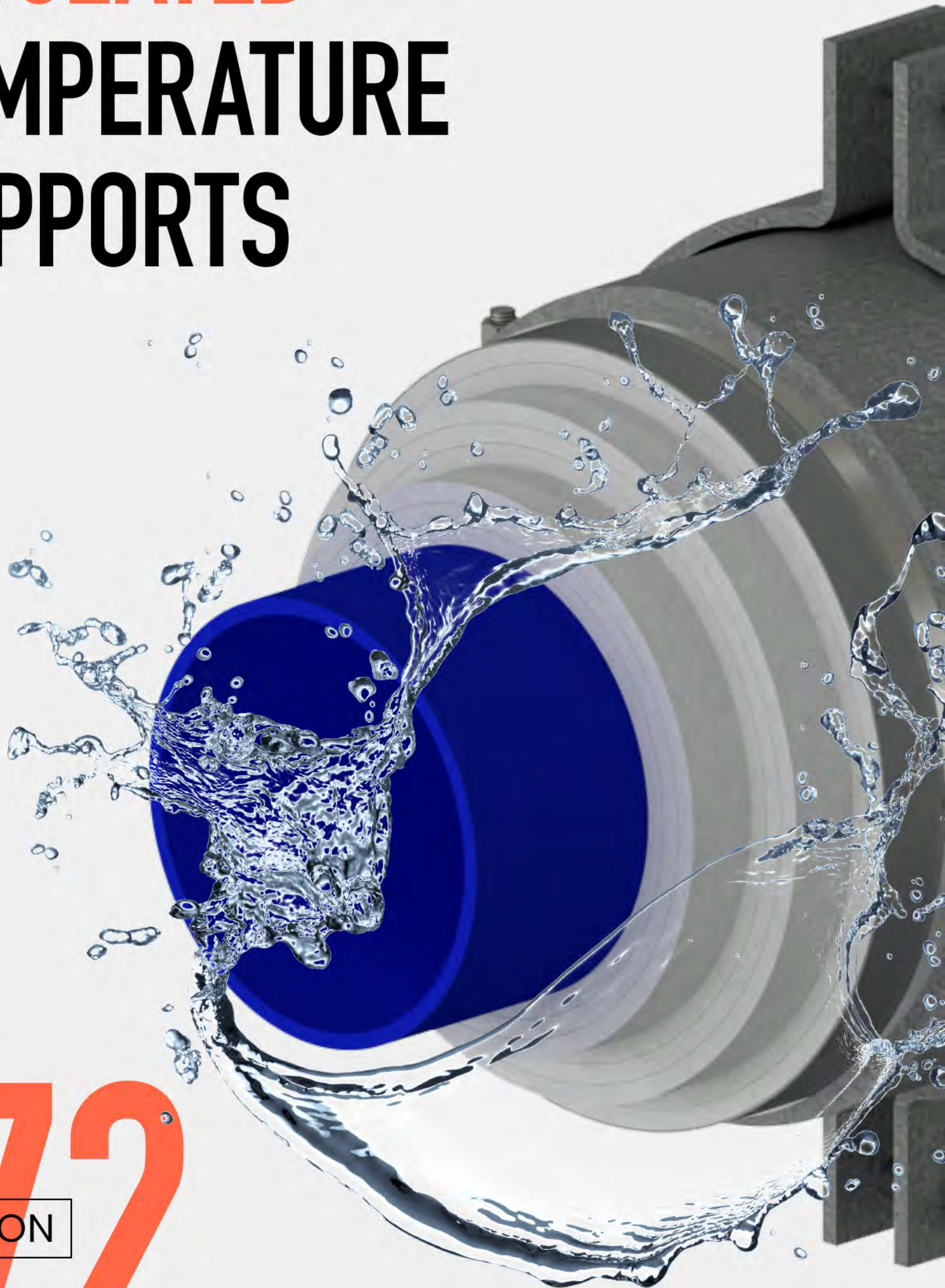








# PRE-INSULATED LOW TEMPERATURE PIPE SUPPORTS



1972

FOUNDATION



# CRYOGEL SUPPORT SELECTION



Cryowrap pipe supports, manufactured with Cryogel insulation material, provide the complete solution for supporting and restraining pipe in low temperature applications.

**RILCO OFFERS A  
COMPLETE LINE OF**

- Supports
- Guides
- Anchors
- Hangers
- Riser Clamps
- Trunnion Supports





# CRYOWRAP

CRYOGENIC  
PIPE SUPPORTS





# CRYOWRAP

# BENEFITS



- ◎ The CryoWrap supports are manufactured to match the diameters of the Aspen Aerogels® Cryogel® Z insulation material.
- ◎ This enables the system to be designed with the piping nested closer together and allows for easy/seamless transitions from the support to the line insulation.
- ◎ The vapor stops that are incorporated into the support design at each end also restrict moisture intrusion.
- ◎ This has proven to be an extremely cost-effective method of construction and facilitates the coordination of the construction schedule.





# CRYOGEL Z™

Space  
Savings

6"

44%

12"

26%

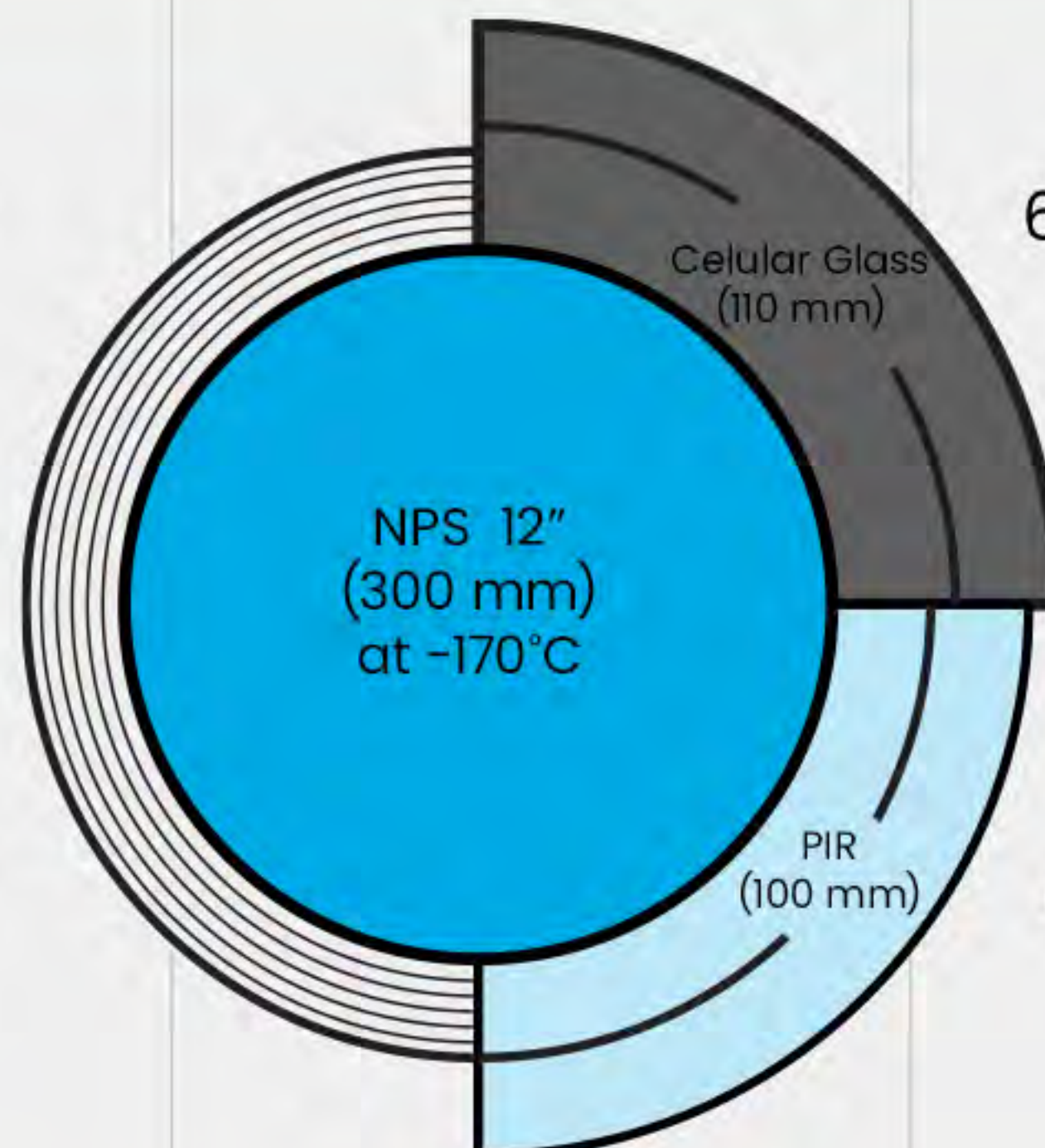
36"

44%

- ◎ Aspen Cryogel saves space by being thinner than conventional insulations.
- ◎ Rilco pipe supports are the same thickness as Aspen Aerogel Insulation thus saving space in the pipe rack for other pipe lines or cable trays.
- ◎ Rilco pipe supports allow the Engineering Construction Purchasing EPC company to make the pipe rack smaller and save on structural steel size and material usage and weight.

55 W/m 23° C

Cryogel Z™  
(50 mm)

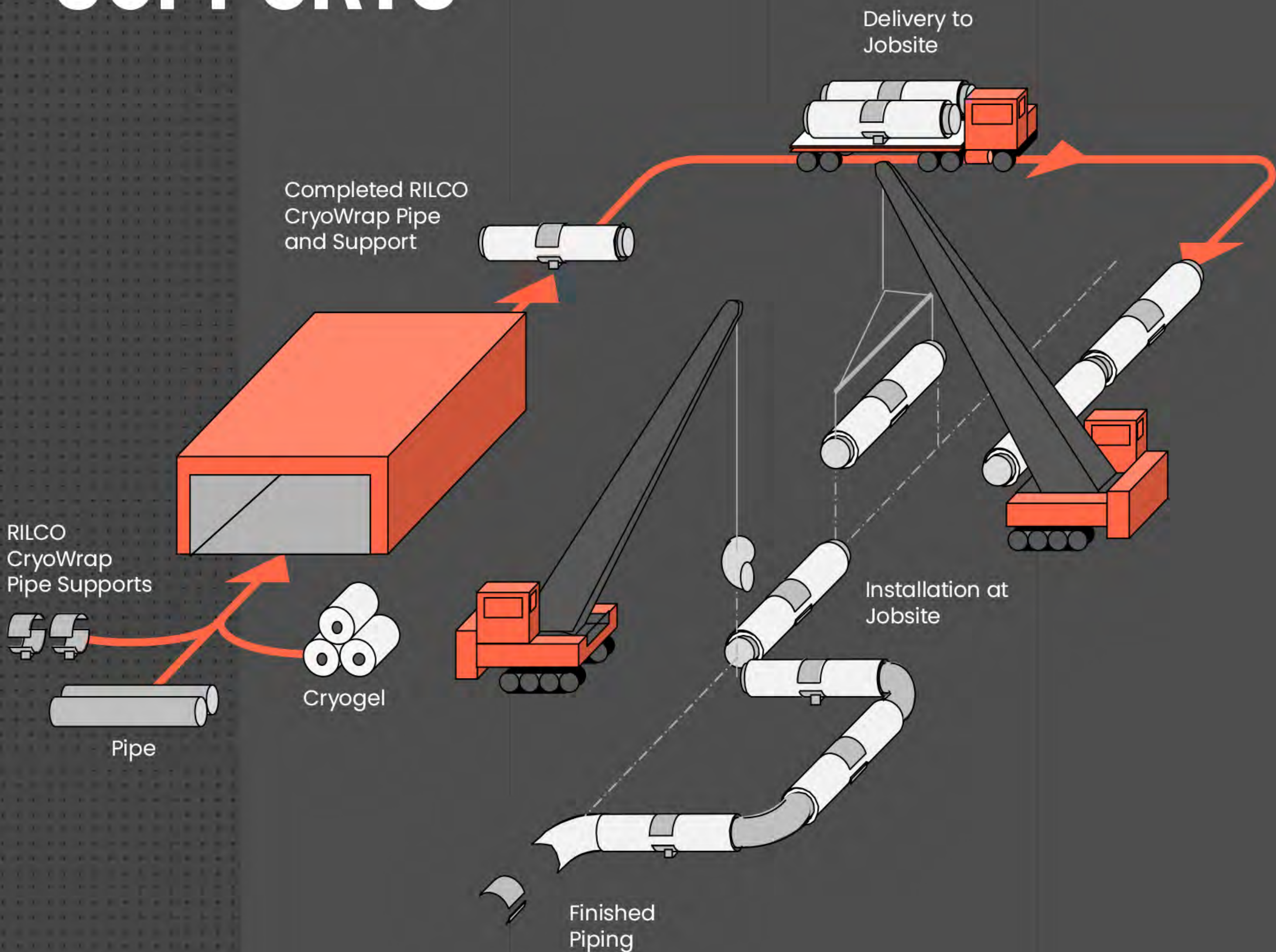


67 W/m 23° C

66 W/m 23° C



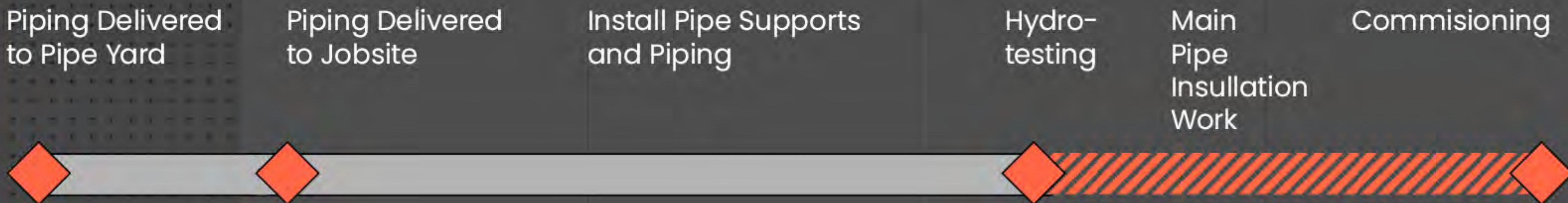
# PRE-INSTALLATION BENEFITS USING CRYOWRAP PIPE SUPPORTS



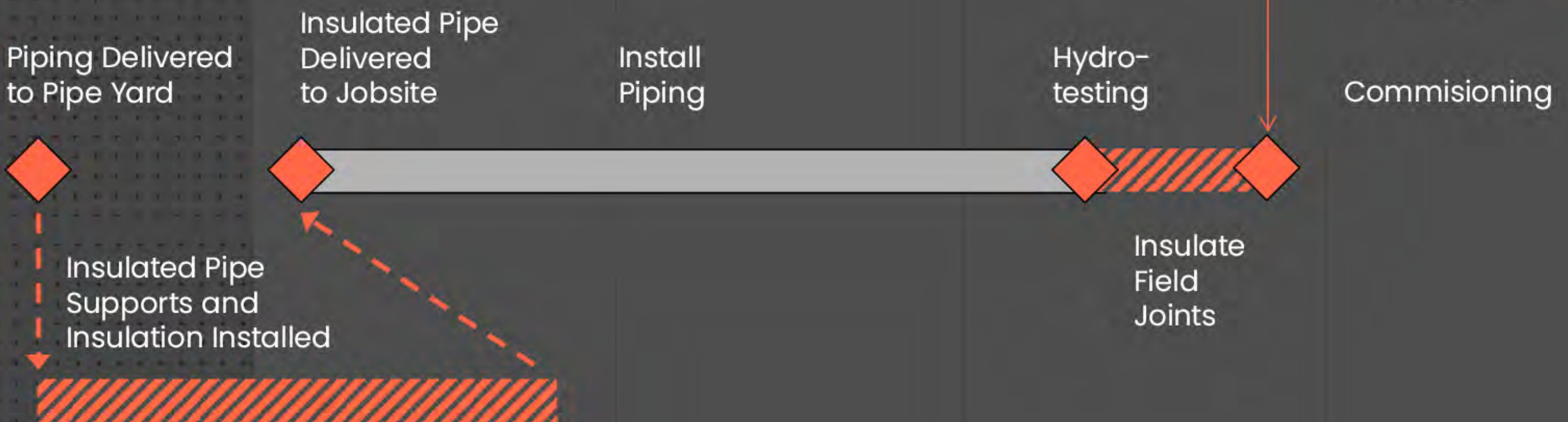


# PRE-INSULATING WITH CRYOWRAP TAKES INSULATION OFF THE CRITICAL PATH

Traditional Construction



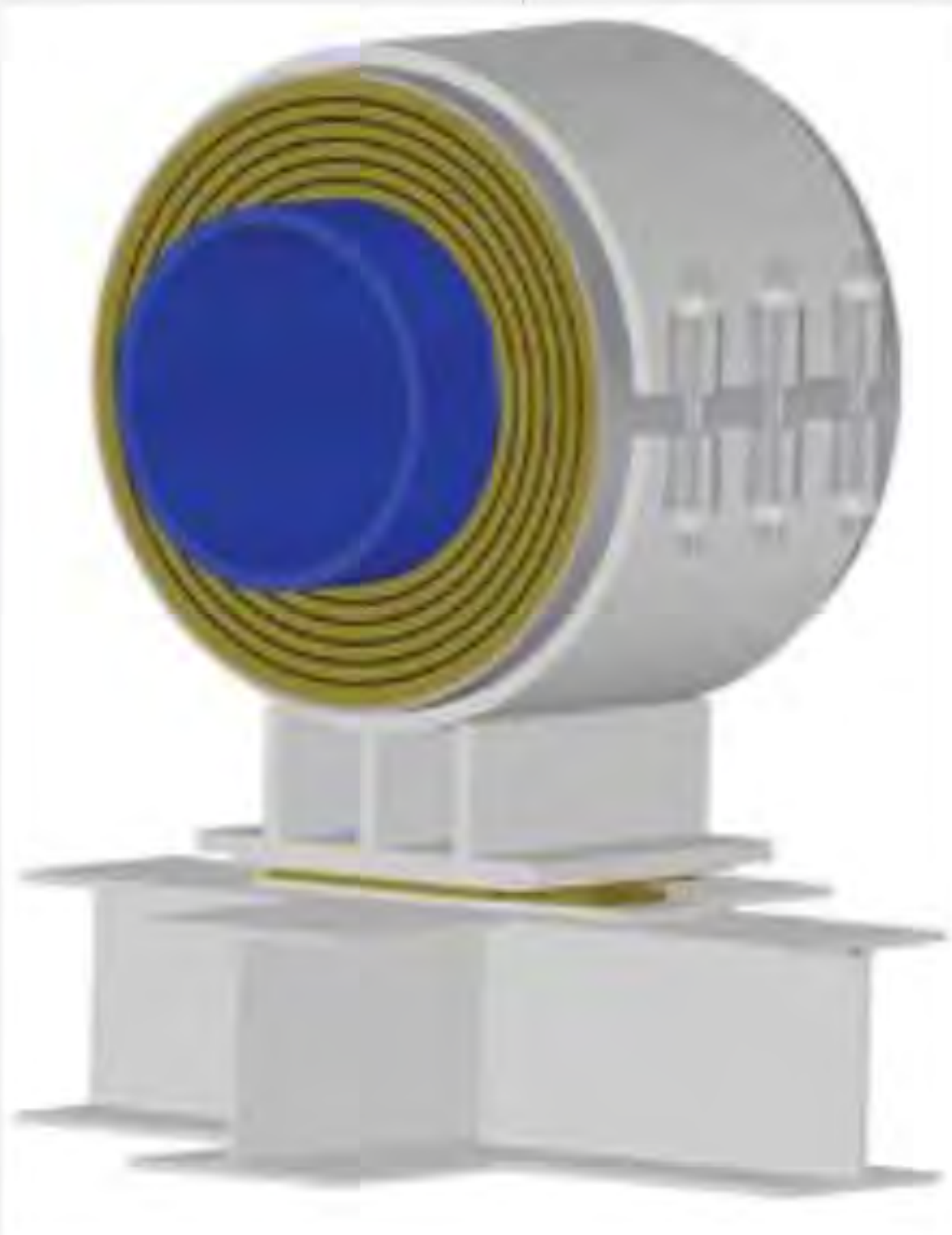
Pre-insulation Model



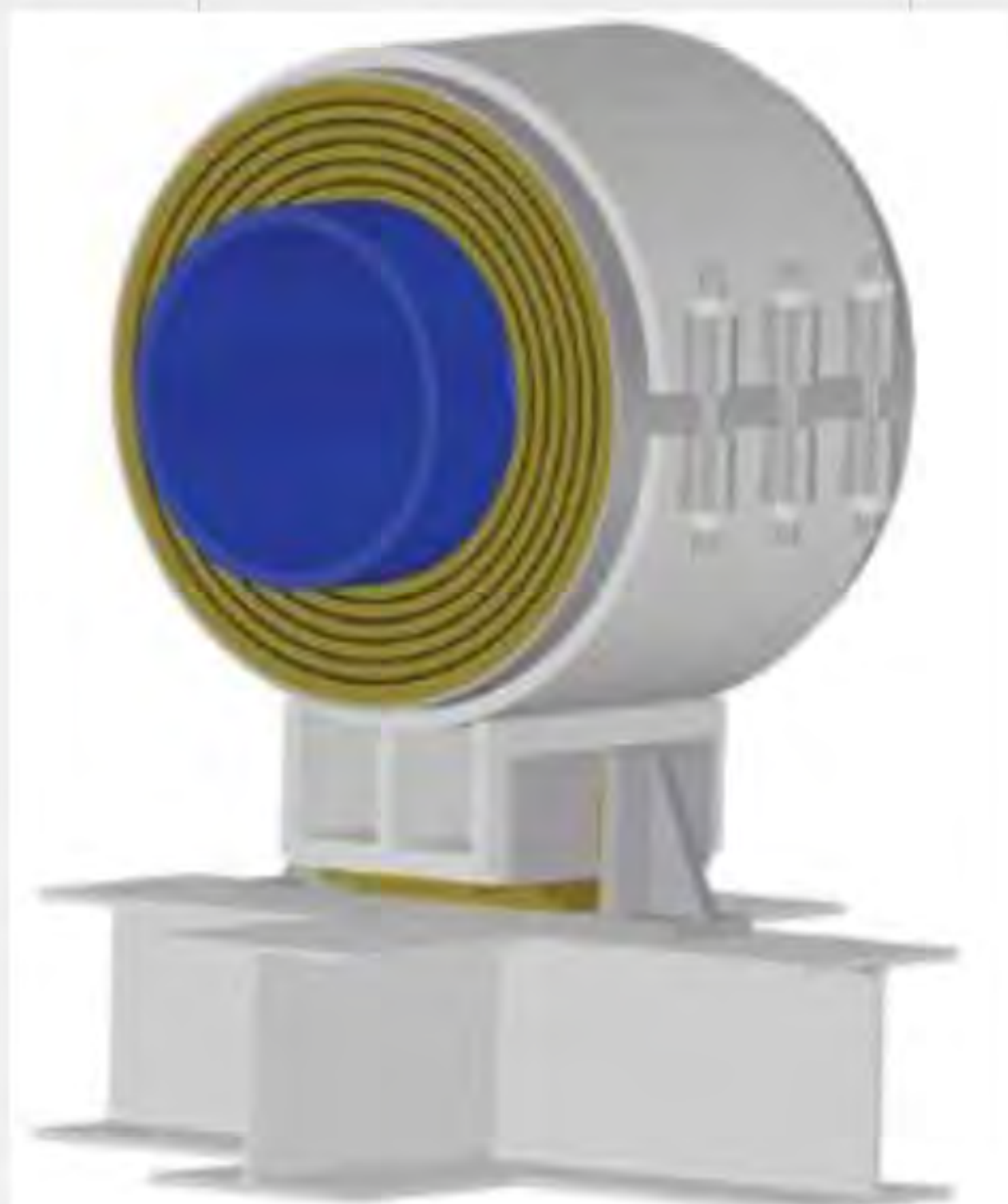


# TYPES OF CRYOGEL SUPPORTS

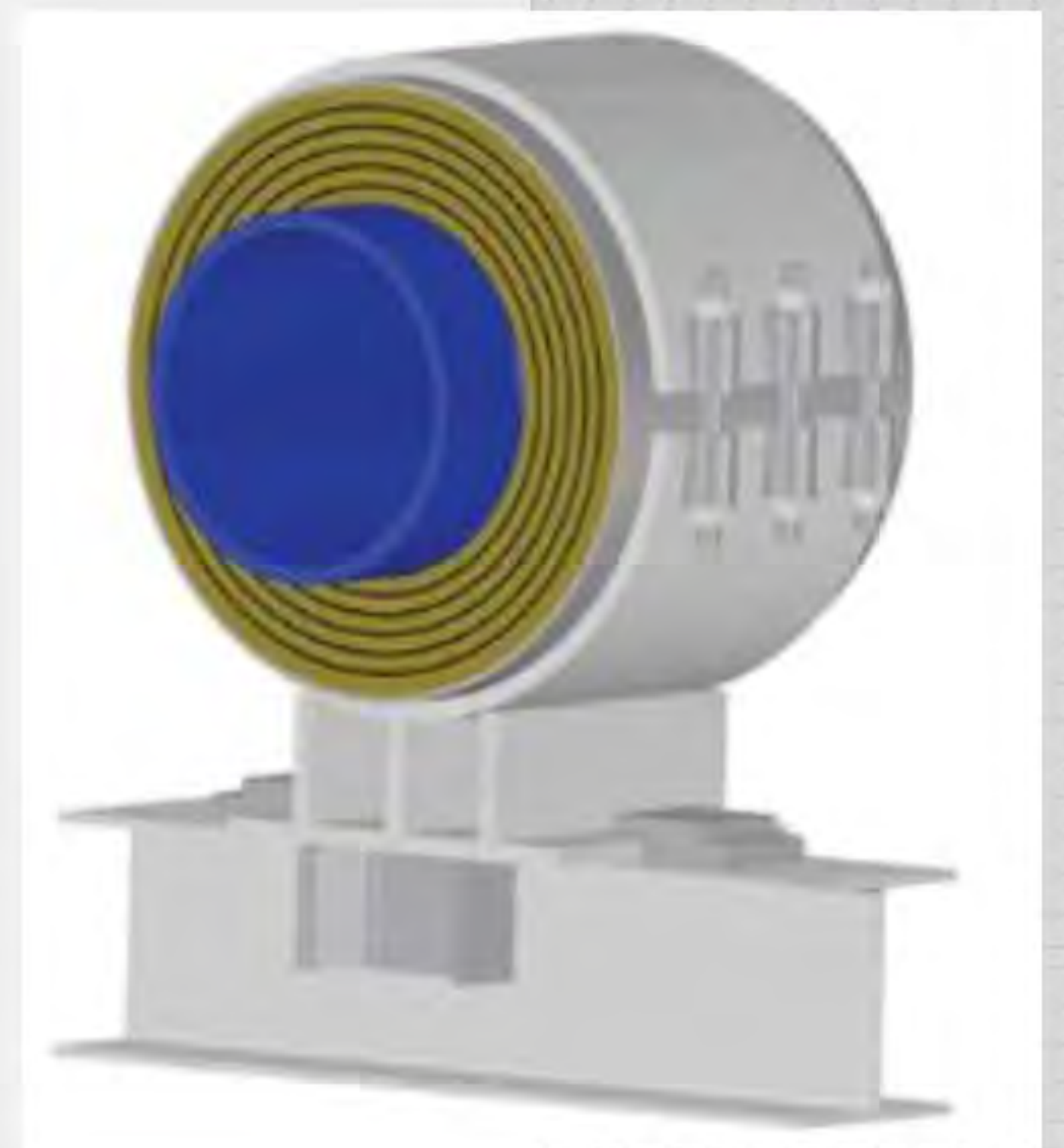
FUNCTION AS A:



RESTING  
SUPPORT



GUIDED  
SUPPORT



ANCHOR  
SUPPORT





# WHY USE RILCO PRE- INSULATED PIPE SUPPORTS ?

## EFFICIENT

- Saves Energy
- Saves Operating Costs

## EASY TO INSTALL

- Saves Construction Time and Cost

## BENEFITS

- Provide a high quality of service that exceeds standards



300+

Projects Worldwide

2010

Foundation

90 %

Oil & Gas

Platinum Sponsor



Headquarters

Norway

Committee Member

ASME B31.3

Offices

USA  
Mexico

Contributing Member



Academy

Singapore  
The Netherlands

Latin America  
Representatives



A high level of knowledge, combined with a passion for science makes us a powerful team to explore the world of stress, without limitations and boundaries.

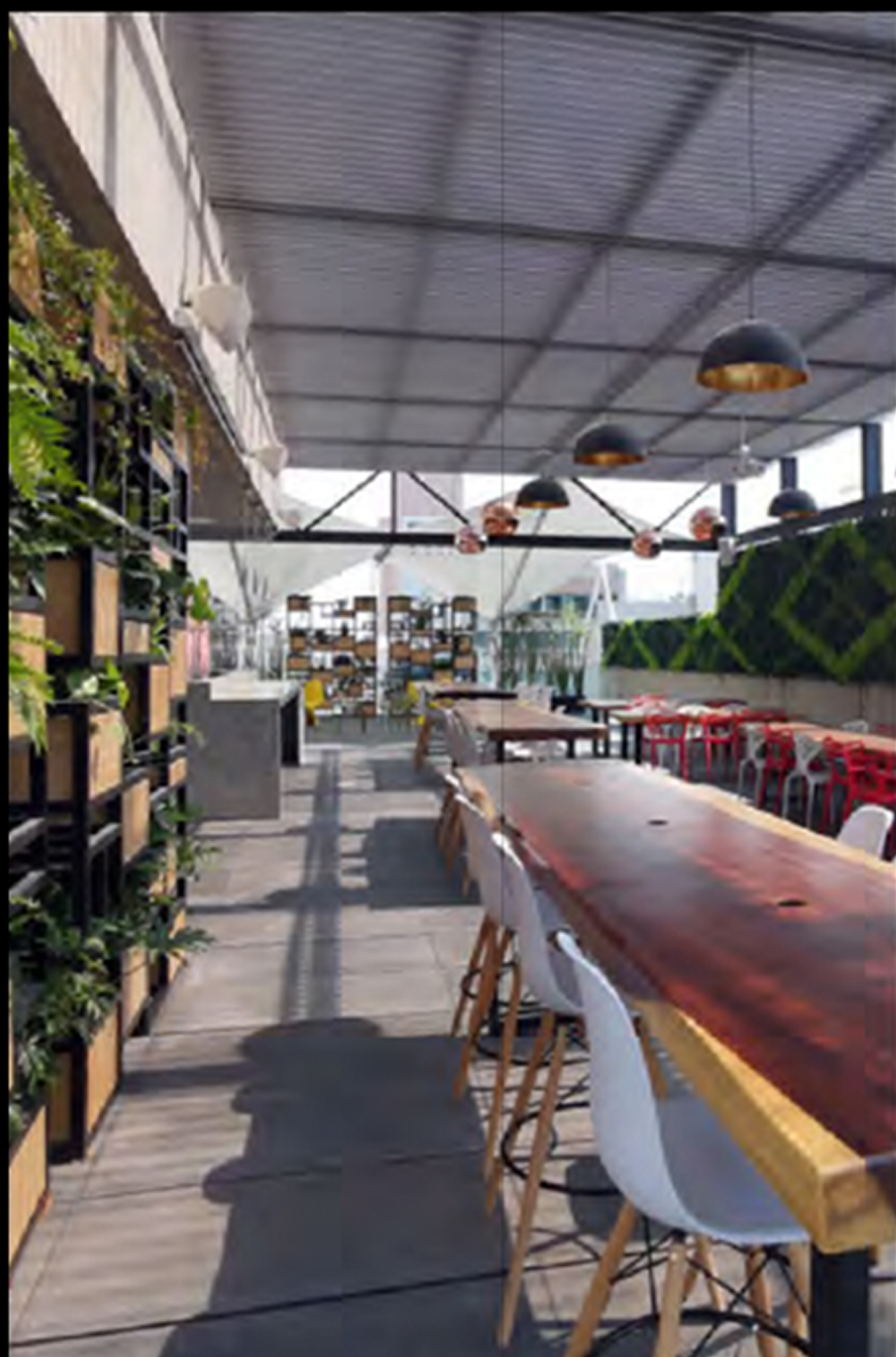




[www.stressman.no](http://www.stressman.no)

Facebook / LinkedIn / Instagram  
[@stressmanengineering](#)

# CONTACT



## MEXICO

Juan Manuel Méndez Franco  
COO

+ (1) 832 573 6168  
[jmmf@stressman.no](mailto:jmmf@stressman.no)



## NORUEGA

Sondre Luca Helgesen  
CEO

+ (47) 901 85 676  
[slh@stressman.no](mailto:slh@stressman.no)



## E.E.U.U.

Juan Manuel Méndez Franco  
COO

+ (1) 832 573 6168  
[jmmf@stressman.no](mailto:jmmf@stressman.no)