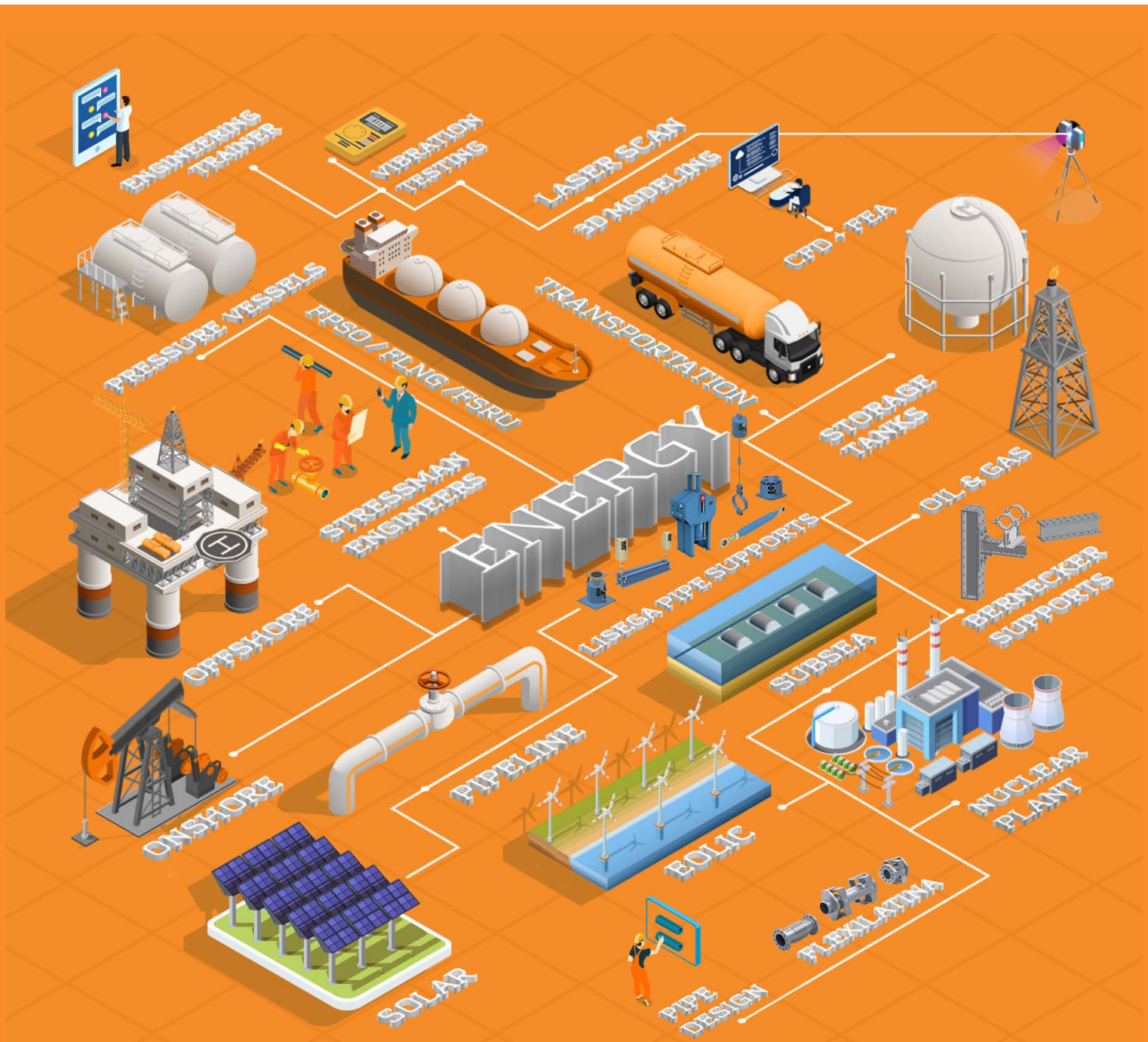




Relax, let us handle your stress. Stressman Engineering is all about stress and the laws of physics. Ranging from simple hand calculations to advanced dynamic 3D finite element analyses, we get the job done efficiently and smoothly.



470+

Worldwide Projects

2010

Foundation

90%

Energy

Platinum Sponsor



THE PSI
ASSOCIATION

Committee Member

ASME B31.3

Member



Norwegian
Energy Partners



Green
Industry
Cluster
NORWAY

Headquarters

Norway

Offices

USA
Mexico
Colombia

Academies

Singapore
The Netherlands

Mexico and USA
Representatives



Ingenieria y Representaciones

Mexico and Texas
Representatives



LISEGA

Mexico and Colombia
Representatives



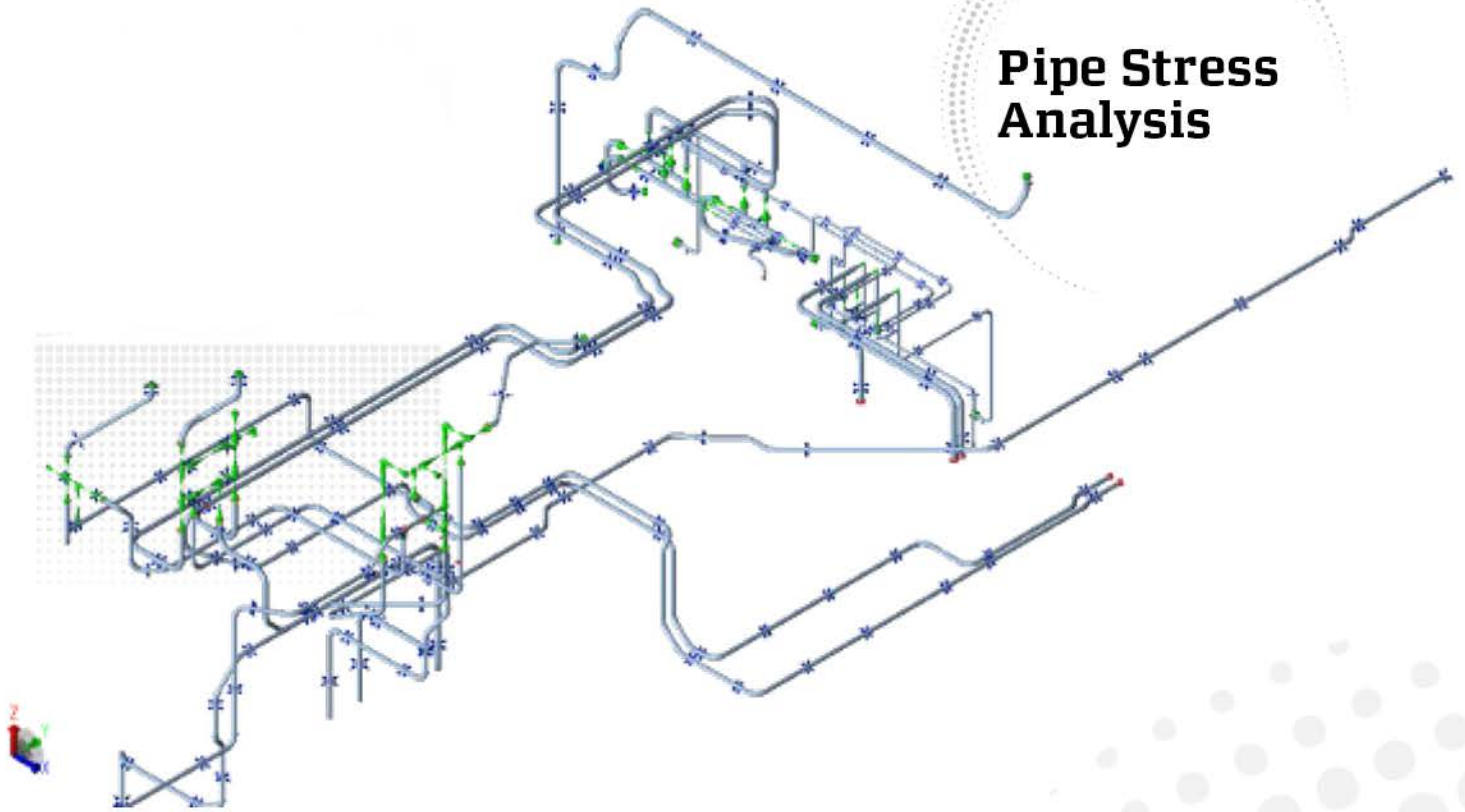
Americas
Representatives

ENGINEERING
TRAINER

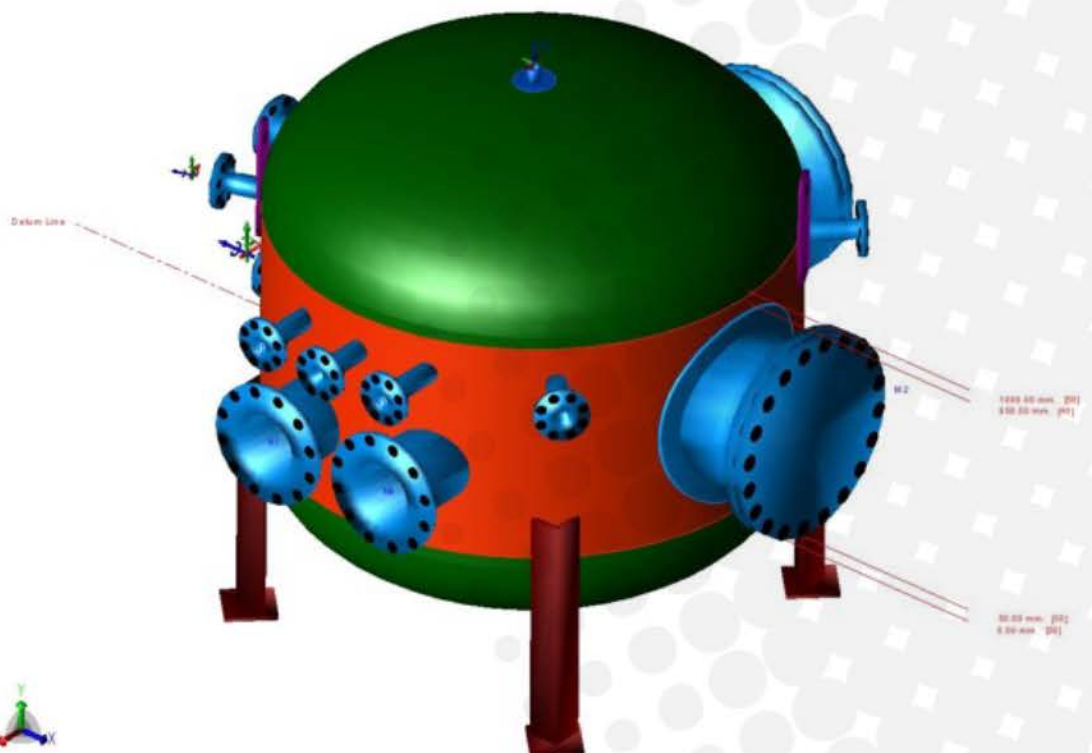
CAPABILITIES

STRESS

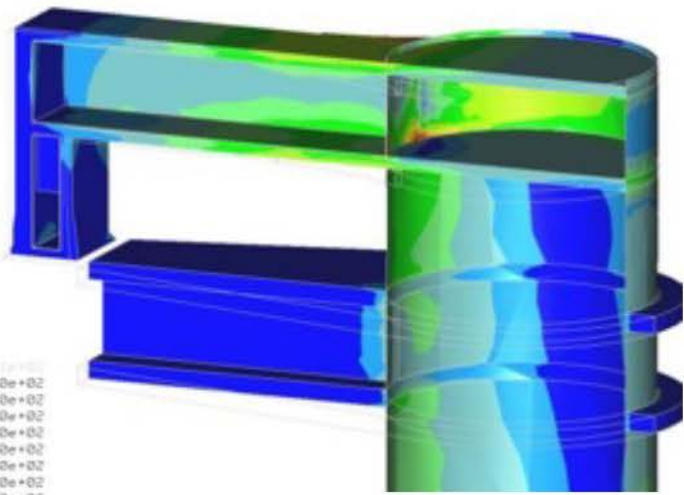
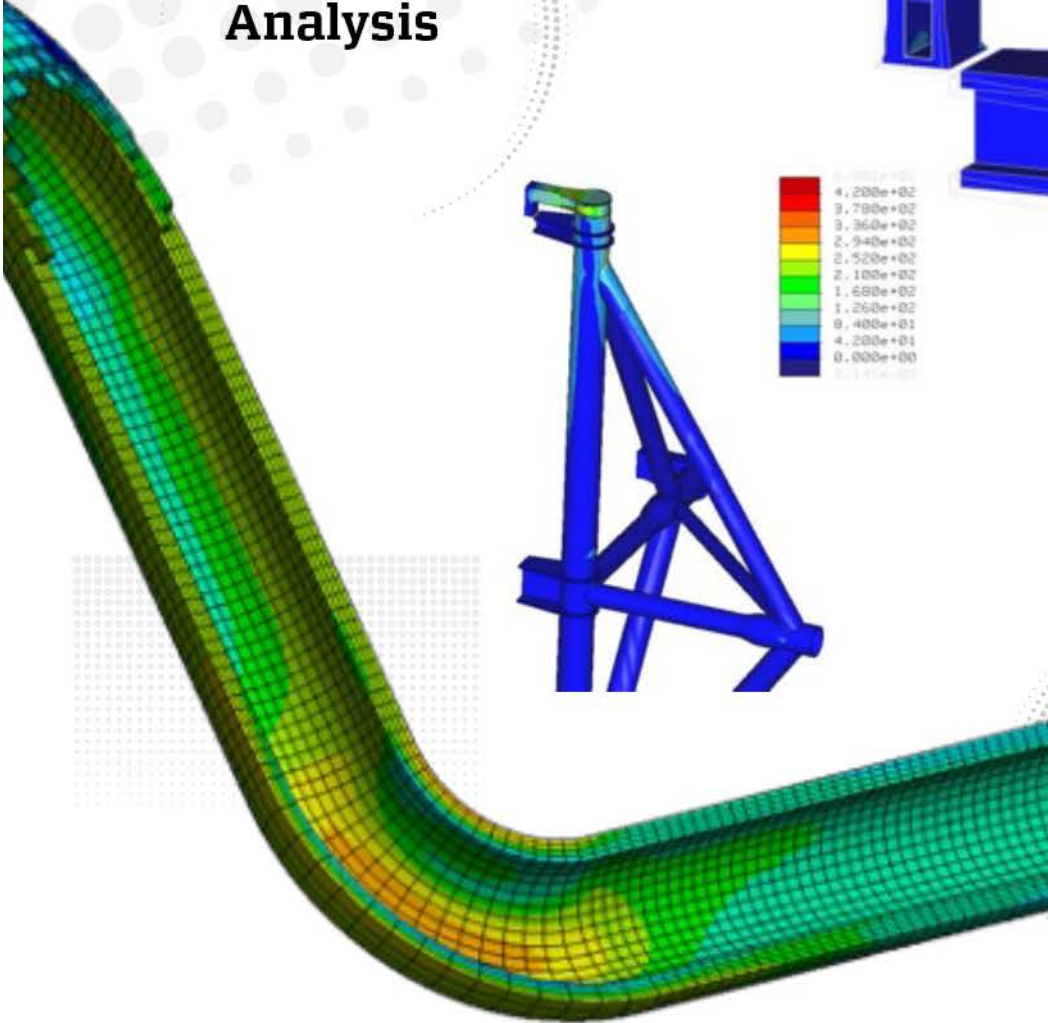
Pipe Stress Analysis



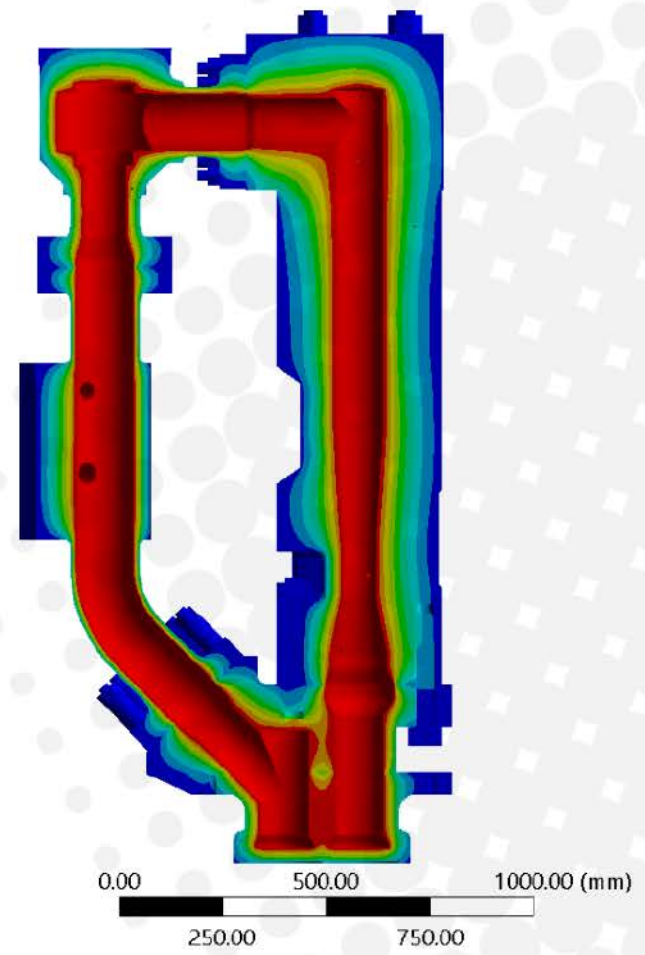
Vessel Calculation



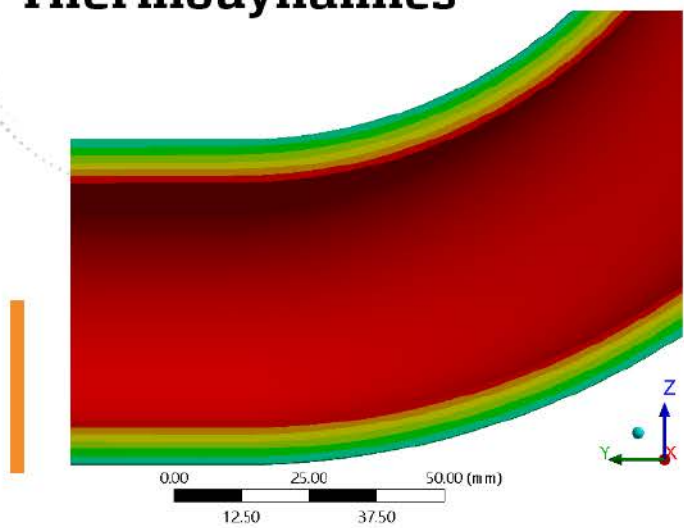
Structural Analysis



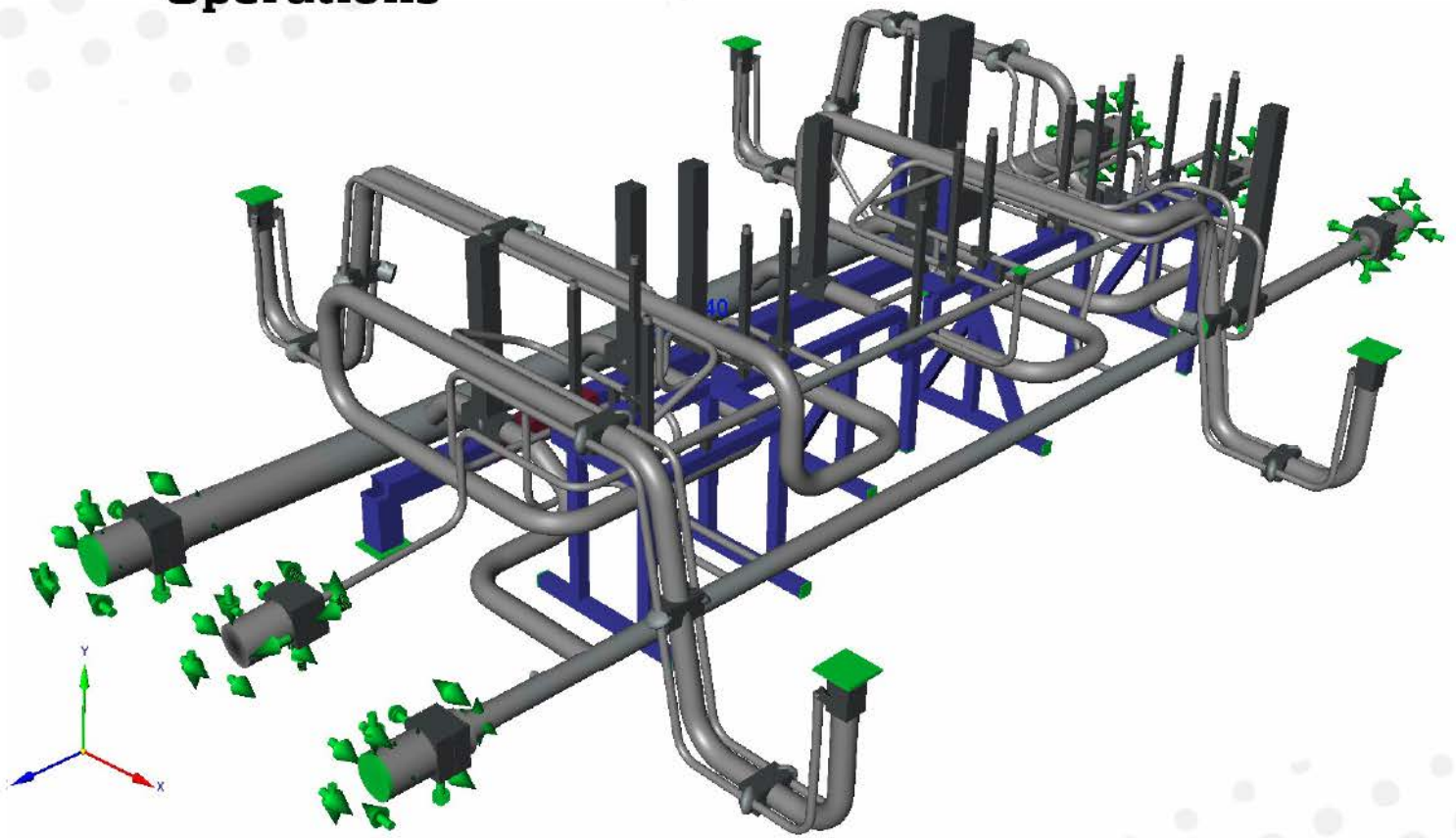
Finite Element Analysis



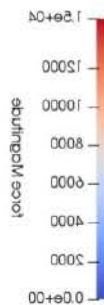
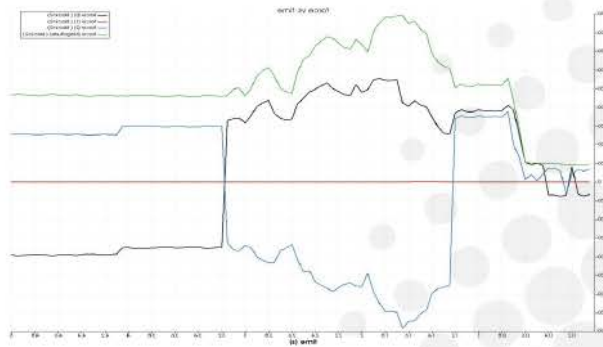
Thermodynamics



Subsea Piping & Marine Operations



Computational Fluid Dynamics





Relax, let us handle
your stress!

Please find more information about us in:
www.stressman.no

Sondre Luca Helgesen

CEO

slh@stressman.no

+ (47) 9018 5676

Juan Manuel Mendez Franco

COO

jmmf@stressman.no

+1 (832) 573 6168